



Til rette vedkommende

Kontor/afdeling

Center for vedvarende energi

Dato

29-10-2021

J nr. 2021 - 14230

/SKLN

Høring af områder som screenes for egnetheden til opstilling af havvind.

Energistyrelsen har igangsat en indledende finscreening af potentielle områder til opstilling af havvind (se vedhæftede kort). Energistyrelsen ønsker en tidlig interesse afklaring i forbindelse med screeningen. Derfor vil styrelsen gerne høre fra relevante myndigheder og organisationer, hvis der er emner eller interesser, som Energistyrelsen skal være særligt opmærksom på i den videre proces for så vidt angår de specifikke områder.

Bemærkninger eller opmærksomhedspunkter bedes fremsendt til Energistyrelsen på e-mail skln@ens.dk **senest torsdag d. 18. november 2021**

Eventuelle spørgsmål kan rettes til Anette Norling på ano@ens.dk, tlf. 3392 6735 eller Søren Dale Pedersen på sdp@ens.dk, tlf. 3395 4323

Energistyrelsen gør opmærksom på, at indkomne høringssvar vil være omfattet af reglerne om aktindsigt. Derudover vil modtagne bemærkninger kunne blive forelagt andre myndigheder til kommentering, hvis det skønnes nødvendigt. Energistyrelsen henstiller i øvrigt til, at man ved afgivelse af høringssvar så vidt muligt bør undgå at inkludere unødvendige personfølsomme oplysninger.

Baggrund

En finscreening er en indledende vurdering af, om et område er egnet til etablering af en havvindmøllepark, herunder hvad konsekvenserne er ift. blandt andet omkostninger, netarbejde og natur-, miljø og planforhold. Finscreeningen omfatter områder indmeldt til Havplanen og omfatter både områder som tidligere har været finscreenet og nye områder, jf. vedhæftede kort. Koordinater for områderne findes i bilag 1.

Områderne er,

- Et nedskaleret Hesselø-område + området syd for det nuværende Hesselø-område
- Et nedskaleret Hesselø-område + Kattegat 2 – et område vest for det nuværende Hesselø-område
- Kriegers Flak 2
- Et nedskaleret Hesselø-område + Kriegers Flak 2 Nord – det nordlige af de to sites, som udgøre Kriegers Flak 2
- Nordsøen 1 – områderne syd for den planlagte Thor Havvindmøllepark.

Energistyrelsen

Carsten Niebuhrs Gade 43
1577 København V

Niels Bohrs Vej 8
6700 Esbjerg

T: +45 3392 6700
E: ens@ens.dk

www.ens.dk

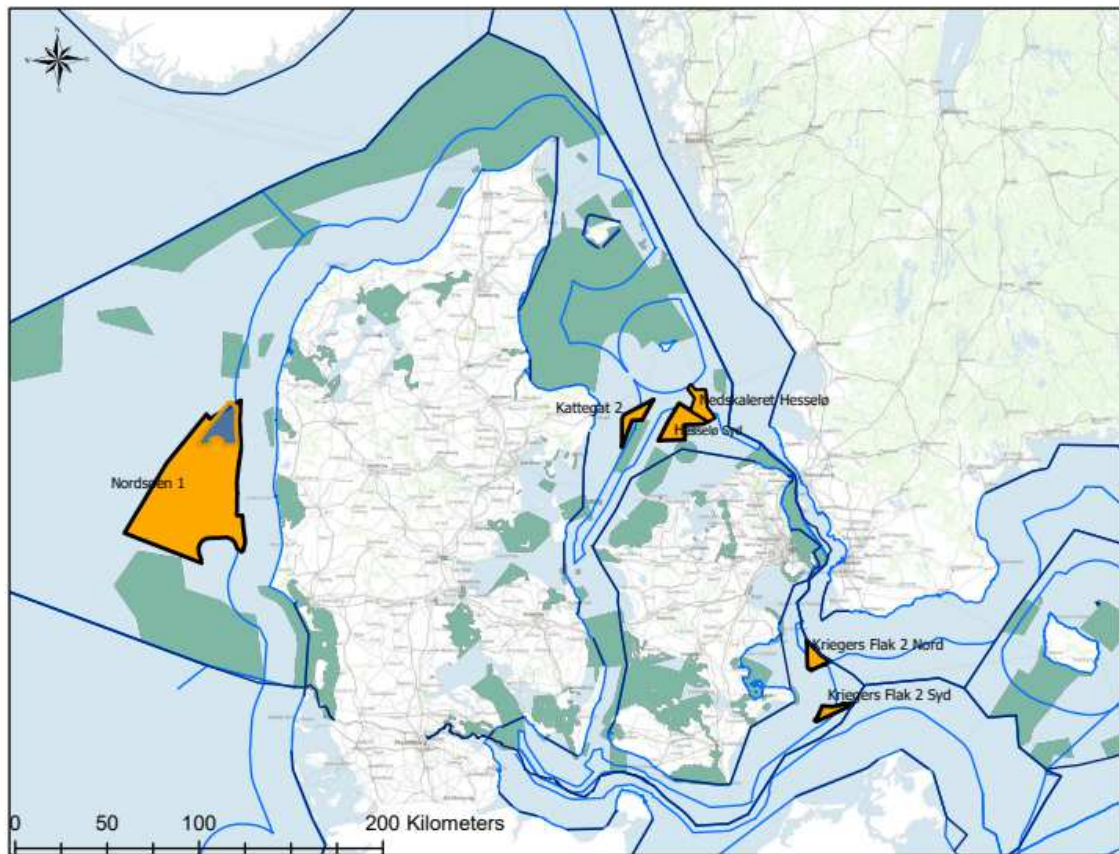


Illustration: Energistyrelsen

Bilag 1: Koordinater for områderne

Tabel 1. Koordinater for nedskaleret Hesselø (Projektion: ETRS_1989_UTM_Zone_32N).

Vertex_index	X	Y
0	6.803.997.054	62.472.300.901
1	6.803.450.918	62.471.973.584
2	6.708.135.666	62.530.131.929
3	6.729.242.803	62.591.979.121
4	6.731.024.004	62.597.382.023
5	6.693.750.051	62.649.750.051
6	6.706.619.892	62.673.674.771
7	6.730.078.469	62.640.921.531
8	678.692.656	62.641.536.923
9	6.786.697.623	62.619.802.377
10	6.794.704.371	62.547.795.629
11	6.836.163.179	62.492.200.037
12	6.836.267.289	62.492.060.428
13	6.804.151.626	62.472.207.109
14	6.803.997.054	62.472.300.901

Tabel 2. Koordinater for området syd for Hesselø området (Projektion: ETRS_1989_UTM_Zone_32N).

vertex_index	X	Y
0	6.803.997.054	62.472.300.901
1	6.803.450.918	62.471.973.584
2	6.708.135.666	62.530.131.929
3	6.729.242.803	62.591.979.121
4	6.731.024.004	62.597.382.023
5	6.693.750.051	62.649.750.051
6	6.706.619.892	62.673.674.771
7	6.730.078.469	62.640.921.531
8	678.692.656	62.641.536.923
9	6.786.697.623	62.619.802.377
10	6.794.704.371	62.547.795.629
11	6.836.163.179	62.492.200.037
12	6.836.267.289	62.492.060.428
13	6.804.151.626	62.472.207.109
14	6.803.997.054	62.472.300.901

Tabel 3. Koordinater for Kattegat 2 (Projektion: ETRS_1989_UTM_Zone_32N).

vertex_index	X	Y
0	6.505.730.642	62.591.192.273
1	6.443.091.217	62.479.067.703
2	6.387.968.524	6.247.718.852
3	6.331.593.042	62.330.612.267
4	6.333.472.224	62.485.331.645
5	6.342.241.744	62.506.002.656
6	6.505.730.642	62.591.192.273

Tabel 4. Koordinater for Krigers flak 2 Syd (Projektion: ETRS_1989_UTM_Zone_32N).

vertex_index	X	Y
0	7.390.612.425	60.839.255.299
1	7.380.214.389	60.846.532.282
2	7.395.218.434	60.866.510.971
3	740.651.616	60.887.255.453
4	7.414.702.923	60.906.348.787
5	7.420.250.149	60.924.665.173
6	7.470.938.679	60.921.530.029
7	7.479.692.273	60.921.849.942
8	7.499.366.125	60.925.140.377
9	7.516.285.946	60.928.513.964
10	7.525.537.321	60.932.157.636
11	7.535.670.423	60.938.480.211
12	754.680.393	60.936.389.398
13	7.553.348.679	60.935.790.029
14	7.559.919.719	60.935.910.063
15	7.572.875.113	60.937.866.196
16	759.283.742	6.094.134.359
17	7.585.851.969	60.930.089.723
18	7.390.612.425	60.839.255.299

Tabel 5. Koordinater for Krigers flak 2 Nord (Projektion: ETRS_1989_UTM_Zone_32N).

vertex_index	X	Y
--------------	---	---

0	737.567.791	61.240.397.636
1	7.376.169.474	61.239.851.484
2	7.376.988.928	61.241.887.669
3	7.387.632.049	61.230.052.004
4	7.416.133.081	61.198.399.849
5	7.439.865.585	61.184.131.332
6	7.467.203.526	61.167.695.685
7	7.468.273.366	6.116.705.252
8	7.465.201.869	61.165.656.021
9	7.439.036.455	61.153.759.548
10	7.438.470.855	6.115.350.048
11	7.437.944.282	61.153.251.807
12	743.790.832	61.153.234.824
13	7.437.348.925	61.152.962.617
14	7.436.792.748	61.152.683.895
15	7.436.239.863	61.152.398.698
16	7.435.690.347	61.152.107.063
17	7.435.144.274	6.115.180.903
18	7.434.601.719	61.151.504.641
19	743.431.572	61.151.339.766
20	7.434.004.779	61.151.173.565
21	743.340.015	61.150.961.121
22	7.432.740.197	61.150.720.889
23	743.208.298	6.115.047.327
24	7.431.428.581	61.150.218.296
25	7.430.777.084	61.149.955.998
26	7.430.496.536	61.149.839.374
27	7.430.478.994	61.149.832.772
28	7.430.435.977	6114981.42
29	7.430.128.569	6.114.968.641
30	7.429.483.119	61.149.409.565
31	7.428.840.814	61.149.125.498
32	740.716.011	61.139.379.992
33	7.407.097.242	61.139.351.733
34	7.373.690.814	61.124.335.498
35	7.372.822.598	61.123.936.894
36	7.372.303.147	61.123.681.712
37	7.371.752.679	61.123.422.364
38	7.371.496.704	61.123.285.543

39	7.370.855.461	61.122.970.529
40	7.368.924.929	61.121.932.965
41	7.368.492.172	61.121.679.587
42	736829.0	61.121.571.524
43	7.368.006.369	61.121.395.151
44	736.703.358	61.120.825.586
45	7.365.183.936	61.119.649.869
46	7.365.035.916	61.119.548.005
47	7.364.955.786	61.119.498.177
48	736476.87	61.119.364.113
49	7.363.378.465	61.118.407.385
50	7.361.906.324	61.117.312.963
51	7.361.764.314	61.117.21.12
52	7.361.714.994	61.117.170.724
53	7.361.619.577	61.117.099.789
54	7.360.801.187	61.116.443.646
55	7.359.389.228	61.117.969.123
56	7.353.857.401	61.123.360.305
57	7.348.055.377	61.128.459.567
58	7.341.998.542	61.133.253.387
59	7.341.691.666	61.133.471.552
60	7.338.924.381	61.252.751.874
61	7.337.001.128	61.278.760.021
62	7.337.050.431	61.278.929.489
63	7.337.342.807	61.279.961.935
64	7.337.627.789	61.280.996.445
65	7.337.905.363	61.282.032.968
66	7.337.972.334	6.128.229.041
67	737.567.791	61.240.397.636
0	7.467.203.526	61.167.695.685
1	7.407.097.242	61.139.351.733
2	7.373.690.814	61.124.335.498
3	7.368.006.369	61.121.395.151
4	7.361.619.577	61.117.099.789
5	7.341.691.666	61.133.471.552
6	7.337.001.128	61.278.760.021
7	7.337.905.363	61.282.032.968
8	7.376.169.474	61.239.851.484
9	7.376.988.928	61.241.887.669

10	7.416.133.081	61.198.399.849
11	7.467.203.526	61.167.695.685
0	7.467.203.526	61.167.695.685
1	7.439.036.455	61.153.759.548
2	7.416.066.229	61.143.383.305
3	7.396.022.649	61.134.373.688
4	7.379.037.326	61.126.738.763
5	7.365.183.936	61.119.649.869
6	7.361.619.577	61.117.099.789
7	7.341.998.542	61.133.253.387
8	7.338.924.381	61.252.751.874
9	7.337.050.431	61.278.929.489
10	7.337.972.334	6.128.229.041
11	7.376.169.474	61.239.851.484
12	7.376.988.928	61.241.887.669
13	7.416.133.081	61.198.399.849
14	7.467.203.526	61.167.695.685

Table 6. Koordinater for Nordsøen 1 (Projektion: ETRS_1989_UTM_Zone_32N).

vertex_index	X	Y
0	4.253.816.975	62.488.116.716
1	4.253.615.589	62.479.143.749
2	4.253.816.975	62.470.170.783
3	4.253.804.232	62.469.377.584
4	425.442.073	62.461.215.888
5	4.255.425.636	62.452.297.096
6	4.255.464.988	6.245.204.864
7	4.256.060.581	62.448.288.215
8	425603.01	6244693.01
9	4.256.146.222	62.441.756.183
10	4.256.079.802	62.440.581.266
11	4.256.021.096	62.439.405.939
12	4.255.970.108	62.438.230.251
13	4.255.926.839	62.437.054.255
14	4.255.891.291	62.435.877.999
15	4.255.863.466	62.434.701.535
16	4.255.843.365	62.433.524.915
17	4.255.830.989	62.432.348.187
18	4.255.826.338	62.431.171.404

19	4.255.829.413	62.429.994.615
20	4.255.840.213	62.428.817.872
21	4.255.858.737	62.427.641.225
22	4.255.884.987	62.426.464.726
23	4.255.918.959	62.425.288.423
24	4.255.960.652	6.242.411.237
25	4.256.010.066	62.422.936.615
26	4.256.067.197	6.242.176.121
27	4.256.132.043	62.420.586.205
28	4.256.204.601	62.419.411.652
29	4.256.284.869	6241823.76
30	4.256.269.367	62.417.084.025
31	4.256.261.034	62.415.930.377
32	425.625.987	62.414.776.698
33	4.256.265.874	62.413.623.035
34	4.256.279.048	62.412.469.432
35	425.629.939	62.411.315.932
36	4.256.326.899	62.410.162.582
37	4.256.361.575	62.409.009.424
38	4.256.403.416	62.407.856.504
39	4.256.435.004	62.407.113.516
40	425.645.242	62.406.703.867
41	4.256.508.586	62.405.551.556
42	4.256.571.911	62.404.399.616
43	4.256.642.393	62.403.248.093
44	425.672.003	62.402.097.029
45	4.256.804.817	6.240.094.647
46	4.256.926.906	62.399.332.138
47	4.257.338.419	62.393.890.857
48	4.257.435.738	62.391.282.942
49	4.257.607.176	62.386.688.795
50	4.257.632.505	62.386.010.024
51	4.257.673.061	62.384.860.961
52	4.257.721.606	62.383.712.208
53	4.257.778.136	6.238.256.382
54	425.784.265	62.381.415.852
55	4.257.915.144	62.380.268.361
56	4.257.995.614	62.379.121.402
57	4.258.084.057	6.237.797.503

58	4.258.180.468	62.376.829.301
59	4.258.284.843	62.375.684.269
60	4.258.397.177	62.374.539.991
61	4.258.517.464	62.373.396.522
62	4.258.629.587	62.372.397.475
63	4.258.645.699	62.372.253.917
64	4.258.781.874	62.371.112.231
65	4.258.925.985	62.369.971.519
66	4.259.096.125	62.367.167.566
67	425.999.176	62.355.587.666
68	4.260.204.541	62.352.910.739
69	4.260.491.024	62.350.368.126
70	4.260.748.107	62.346.555.077
71	4.260.855.749	62.344.958.532
72	4.260.890.767	62.342.670.382
73	4.260.982.649	62.339.669.262
74	4.261.055.177	62.337.300.304
75	426.112.924	62.334.881.226
76	4.261.067.944	62.330.388.246
77	4.260.756.541	62.327.624.462
78	426.038.505	62.322.859.885
79	4.259.936.034	62.315.028.391
80	4.258.624.425	62.305.863.179
81	4.258.014.278	62.300.824.116
82	4.257.837.232	62.300.000.037
83	4.257.758.199	6.229.963.217
84	4.257.509.823	62.298.438.596
85	425.726.916	62.297.243.442
86	425.703.622	62.296.046.759
87	4.256.811.013	62.294.848.596
88	4.256.593.549	62.293.649.004
89	4.256.383.835	62.292.448.033
90	4.256.181.882	62.291.245.733
91	4.255.987.697	62.290.042.153
92	4.255.801.289	62.288.837.345
93	4.255.622.665	62.287.631.358
94	4.255.451.833	62.286.424.243
95	425528.88	62.285.216.049
96	4.255.133.573	62.284.006.828

97	4.254.986.158	6.228.279.663
98	4.254.846.561	62.281.585.504
99	4.254.714.788	62.280.373.503
100	4.254.590.846	62.279.160.676
101	4.254.474.738	62.277.947.074
102	4.254.366.469	62.276.732.747
103	4.253.054.892	62.268.017.535
104	4.252.554.347	62.264.550.854
105	425.183.211	62.258.535.449
106	4.251.560.247	62.255.593.95
107	4.251.319.841	62.254.809.613
108	425.108.664	62.253.678.217
109	4.250.860.655	62.252.545.357
110	4.250.641.895	6.225.141.108
111	4.250.430.369	62.250.275.431
112	4.250.226.086	62.249.138.458
113	4.250.029.053	62.248.000.205
114	4.249.839.279	6.224.686.072
115	4.249.656.772	62.245.720.048
116	4.249.481.538	62.244.578.237
117	4.249.313.585	62.243.435.332
118	424.915.292	62.242.291.379
119	424.899.955	62.241.146.426
120	4.248.886.182	62.240.257.065
121	4.248.853.479	62.240.000.518
122	4.248.714.716	62.238.853.703
123	4.248.583.264	62.237.706.027
124	4.248.501.078	62.237.052.491
125	424.845.913	62.236.557.536
126	4.248.342.319	62.235.408.277
127	4.248.292.255	62.234.419.691
128	4.248.130.682	62.233.107.643
129	4.248.035.866	62.231.956.361
130	4.247.948.389	62.230.804.498
131	4.247.868.255	62.229.65.21
132	4.247.795.468	62.228.499.216
133	4.247.642.065	62.227.389.048
134	4.247.463.366	62.226.095.816
135	4.245.811.559	62.214.141.806

136	4.245.673.147	62.213.219.512
137	4.245.541.842	62.212.296.179
138	4.245.417.653	62.211.371.863
139	4.245.300.588	62.210.446.617
140	4.245.190.653	62.209.520.497
141	4.245.087.854	62.208.593.558
142	4.245.035.335	62.208.084.213
143	4.244.992.198	62.207.665.855
144	4.244.903.691	62.206.737.442
145	4.244.872.387	62.206.379.947
146	4.244.822.337	62.205.808.375
147	4.244.748.142	62.204.878.709
148	424.468.111	62.203.948.499
149	4.244.621.245	6220301.78
150	4.244.450.363	62.201.891.796
151	4.244.286.192	62.200.764.794
152	4.244.128.738	62.199.636.834
153	4.243.978.005	62.198.507.956
154	4.243.834.001	6219737.82
155	4.243.696.729	62.196.247.606
156	4.243.566.195	62.195.116.214
157	4.243.442.403	62.193.984.065
158	4.243.325.357	62.192.851.199
159	4.243.215.062	62.191.717.655
160	4.243.111.522	62.190.583.475
161	424.301.474	62.189.448.698
162	4.242.926.004	62.188.372.603
163	4.242.749.319	62.187.309.767
164	4.242.579.777	62.186.245.769
165	4.242.417.384	62.185.180.655
166	4.242.262.147	62.184.114.475
167	4.242.114.075	62.183.047.277
168	4.241.973.172	62.181.979.108
169	4.241.839.447	62.180.910.017
170	4.241.712.904	62.179.840.053
171	4.241.593.549	62.178.769.262
172	4.241.481.389	62.177.697.694
173	4.241.376.427	62.176.625.397
174	424.127.867	62.175.552.419

175	424.118.812	62.174.478.809
176	4.241.104.782	62.173.404.615
177	424.102.866	62.172.329.886
178	4.240.860.567	62.171.133.936
179	4.240.700.013	6.216.993.695
180	4.240.693.345	62.169.884.742
181	4.240.547.006	62.168.738.977
182	4.240.401.552	62.167.540.063
183	4.240.263.657	62.166.340.256
184	4.240.066.741	62.165.139.604
185	424.000.536	62.163.938.154
186	4.239.947.765	62.162.735.955
187	4.239.787.765	62.161.533.053
188	4.239.687.738	62.160.329.498
189	4.239.595.298	62.159.125.335
190	4.238.654.398	62.146.401.535
191	4.238.569.966	62.145.211.502
192	4.238.492.633	62.144.020.986
193	4.238.422.404	62.142.830.031
194	423.835.928	62.141.638.677
195	4.238.317.136	62.140.742.095
196	4.238.303.263	62.140.446.968
197	4.238.254.356	62.139.254.946
198	4.238.212.561	62.138.062.654
199	4.238.177.878	62.136.870.133
200	423.815.031	62.135.677.427
201	4.238.129.857	62.134.484.578
202	4.238.116.519	62.133.291.627
203	4.238.110.298	62.132.098.619
204	4.238.111.193	62.130.905.595
205	4.238.119.205	62.129.712.597
206	4.238.134.333	62.128.519.668
207	4.238.156.577	62.127.326.851
208	4.238.185.935	62.126.134.187
209	4.238.361.704	62.119.765.873
210	423825.78	6211367.49
211	4.238.459.186	62.104.701.934
212	4.239.062.941	62.095.747.039
213	4.240.034.002	62.086.828.247

214	4.240.296.571	6.208.519.066
215	4.240.764.698	62.081.937.249
216	4.240.034.541	62.081.949.099
217	4.240.033.263	62.081.876.622
218	423.930.283	62.040.449.666
219	4.238.571.072	6.199.894.754
220	4.237.942.114	61.963.275.804
221	4.237.885.015	61.960.037.413
222	4.240.015.077	61.960.002.887
223	4.240.352.832	61.959.997.412
224	4.244.313.394	61.959.933.215
225	4.268.068.409	61.959.548.169
226	4.268.703.247	61.953.923.947
227	426.916.604	61.950.950.843
228	4.269.638.987	61.946.579.464
229	4.269.823.761	61.945.085.575
230	4.270.175.341	61.939.870.939
231	4.270.288.421	61.938.867.321
232	4.270.401.986	61.933.807.334
233	4.270.684.858	61.928.870.999
234	4.271.782.658	61.913.124.099
235	4.272.103.541	61.909.105.539
236	4.272.253.452	61.907.592.837
237	4.272.289.815	61.906.393.458
238	4.272.333.818	61.905.194.334
239	4.272.385.459	61.903.995.516
240	4.272.444.736	6.190.279.705
241	4.272.511.647	61.901.598.987
242	4.272.586.188	61.900.401.374
243	4.272.668.358	6.189.920.426
244	4.272.758.153	61.898.007.694
245	4.272.855.568	61.896.811.725
246	427296.06	6189561.64
247	4.273.073.245	61.894.421.769
248	4.273.193.499	61.893.227.879
249	4.273.321.355	6.189.203.478
250	427.345.681	61.890.842.519
251	4.273.599.857	61.889.651.146
252	4.273.750.492	61.888.460.708

253	4.273.908.706	61.887.271.254
254	4.274.074.496	61.886.082.832
255	4.274.247.852	6.188.489.549
256	4.274.876.952	6.188.062.949
257	4.275.951.182	61.874.096.222
258	427.661.803	61.870.757.694
259	4.277.061.847	61.865.925.738
260	4.277.180.261	6.186.467.938
261	4.277.306.474	61.863.433.787
262	4.277.440.482	61.862.189.009
263	4.277.582.279	61.860.945.094
264	4.277.695.987	61.860.000.194
265	427.773.186	61.859.702.091
266	4.277.889.219	61.858.460.048
267	4.278.054.351	61.857.219.016
268	4.278.227.247	61.855.979.041
269	4.278.407.902	61.854.740.172
270	4.278.596.309	61.853.502.459
271	427.879.246	6.185.226.595
272	4.278.996.348	61.851.030.692
273	4.279.207.964	61.849.796.735
274	4.279.409.155	61.848.666.094
275	4.279.654.348	61.847.332.916
276	4.279.912.721	61.845.956.013
277	4.280.319.664	61.842.375.075
278	4.280.425.258	61.841.194.474
279	4.280.538.143	61.840.014.548
280	4.280.658.316	61.838.835.342
281	4.280.785.771	61.837.656.901
282	4.280.920.505	6.183.647.927
283	4.281.062.512	61.835.302.494
284	4.281.211.786	61.834.126.618
285	4.281.368.322	61.832.951.686
286	4.281.532.113	61.831.777.744
287	4.281.703.154	61.830.604.836
288	4.281.881.439	61.829.433.007
289	4.282.066.959	61.828.262.302
290	4.282.259.709	61.827.092.765
291	428.245.968	61.825.924.442

292	4.282.666.866	61.824.757.376
293	4.282.686.886	61.823.865.334
294	4.282.876.543	61.820.337.721
295	4.283.156.095	61.815.873.839
296	4.281.978.625	61.808.558.762
297	4.280.941.396	61.802.884.839
298	4.280.586.976	61.801.465.501
299	427.979.711	61.798.159.925
300	4.279.073.196	61.796.091.099
301	4.278.286.112	61.793.614.051
302	4.277.423.512	61.790.836.951
303	4.276.234.848	61.786.678.307
304	4.275.629.328	61.784.471.797
305	4.274.539.492	61.780.392.847
306	4.274.205.509	61.779.384.449
307	427.387.885	61.778.373.654
308	4.273.559.532	61.777.360.516
309	4.273.247.571	61.776.345.088
310	4.272.942.985	61.775.327.425
311	4.272.645.788	61.774.307.578
312	4.272.355.997	61.773.285.603
313	4.272.073.627	61.772.261.552
314	4.271.798.693	61.771.123.548
315	4.271.531.209	61.770.207.441
316	4.271.270.301	61.769.158.664
317	4.271.056.353	61.768.929.755
318	4.264.957.795	61.766.189.556
319	4.263.381.535	61.763.067.385
320	4.262.782.585	61.763.490.387
321	4.239.275.057	61.779.877.989
322	423.295.676	61.799.124.416
323	4.232.736.386	61.799.782.825
324	4.231.990.967	61.801.843.854
325	4.231.170.771	61.803.876.283
326	4.230.276.894	61.805.877.402
327	4.229.310.529	61.807.784.454
328	4.228.272.964	61.809.775.071
329	4.227.165.585	61.811.666.421
330	4.225.989.869	61.813.516.065

331	4.224.747.384	61.815.321.535
332	4.223.439.789	61.817.080.423
333	4.222.068.828	61.818.790.382
334	4.220.636.331	61.820.449.129
335	4.219.144.208	61.822.054.452
336	4.217.594.452	61.823.604.209
337	4.215.989.129	61.825.096.331
338	4.214.330.381	61.826.528.829
339	4.212.620.423	6.182.789.979
340	4.210.861.535	61.829.207.385
341	4.210.056.414	61.829.761.451
342	4.209.056.064	61.830.449.869
343	420.720.642	61.831.625.586
344	4.205.315.071	61.832.732.965
345	4.203.384.539	61.833.770.529
346	4.201.417.402	61.834.736.895
347	4.199.416.283	61.835.630.771
348	4.197.383.853	61.836.450.967
349	4.195.322.824	61.837.196.387
350	4.193.235.946	61.837.866.036
351	4.191.126.003	61.838.459.022
352	4.188.995.811	61.838.974.553
353	4.186.848.211	61.839.411.941
354	418.468.607	61.839.770.602
355	4.182.512.272	61.840.050.059
356	4.180.329.719	61.840.249.937
357	4.179.477.019	61.840.296.708
358	4.178.141.321	61.840.369.971
359	417595	6184041
360	4.173.758.679	61.840.369.971
361	4.173.140.051	61.840.344.166
362	4.155.650.851	61.839.524.203
363	4.138.150.852	61.838.704.203
364	4.121.525.078	61.837.924.722
365	4.104.600.917	61.837.620.296
366	4.103.488.679	61.837.589.971
367	4.101.489.115	61.837.483.459
368	4.085.779.115	61.836.383.459
369	4.085.590.281	61.836.369.937

370	4.083.407.727	61.836.170.059
371	408.123.393	61.835.890.602
372	4.079.219.505	61.835.556.444
373	4.079.071.789	61.835.531.941
374	4.077.050.564	61.835.120.291
375	4.076.924.189	61.835.094.553
376	4.074.793.997	61.834.579.022
377	4.072.684.054	61.833.986.036
378	4.070.597.176	61.833.316.387
379	4.068.536.147	61.832.570.967
380	4.066.503.717	61.831.750.771
381	4.064.502.598	61.830.856.895
382	4.062.535.461	61.829.890.529
383	4.060.604.929	61.828.852.965
384	405.871.358	61.827.745.586
385	4.056.863.936	61.826.569.869
386	4.055.058.465	61.825.327.385
387	4.053.299.577	6.182.401.979
388	4.051.589.619	61.822.648.829
389	4.049.930.871	61.821.216.331
390	4.048.325.548	61.819.724.209
391	404.800.228	61.819.400.941
392	4.046.775.792	61.818.174.452
393	4.046.311.947	61.817.675.418
394	4.045.283.669	61.816.569.129
395	4.043.851.172	61.814.910.382
396	4.042.480.211	61.813.200.423
397	4.041.172.616	61.811.441.535
398	4.039.930.131	61.809.636.065
399	4.038.754.415	61.807.786.421
400	4.037.647.035	61.805.895.071
401	4.036.609.471	6.180.396.454
402	4.035.643.106	61.801.997.402
403	4.034.749.229	61.799.996.283
404	4.033.929.033	61.797.963.854
405	4.033.183.614	61.795.902.825
406	4.032.513.964	61.793.815.946
407	4.031.920.978	61.791.706.003
408	4.031.405.447	61.789.575.811

409	4.030.968.059	61.787.428.211
410	4.030.609.398	6.178.526.607
411	4.030.329.941	61.783.092.273
412	4.030.130.063	61.780.909.719
413	4.030.010.029	61.778.721.322
414	402997	6177653
415	4.030.010.029	61.774.338.679
416	4.030.130.063	61.772.150.281
417	4.030.320.742	61.770.068.176
418	4.030.329.941	61.769.967.728
419	4.030.449.417	61.768.960.309
420	4.031.909.417	61.757.480.309
421	4.032.069.398	6.175.631.393
422	4.032.428.059	61.754.151.789
423	4.032.865.447	6.175.200.419
424	4.032.998.504	61.751.454.393
425	4.033.380.978	61.749.873.997
426	4.033.973.964	61.747.764.054
427	4.034.643.614	61.745.677.176
428	4.035.389.033	61.743.616.147
429	4.036.209.229	61.741.583.717
430	4.037.103.106	61.739.582.598
431	403746.07	61.738.833.314
432	4.041.390.993	61.730.742.467
433	4.042.454.242	61.728.036.923
434	4.042.699.623	61.726.532.756
435	4.042.791.672	61.725.968.499
436	4.043.465.775	61.717.422.106
437	4.043.639.941	61.715.577.728
438	4.043.919.398	6.171.340.393
439	4.044.278.059	61.711.241.789
440	4.044.715.447	6.170.909.419
441	4.045.230.978	61.706.963.997
442	4.045.823.964	61.704.854.054
443	4.046.493.614	61.702.767.176
444	4.047.028.622	61.701.287.919
445	4.035.338.231	61.705.812.268
446	3.986.588.063	61.724.679.284
447	3.967.934.306	61.731.898.557

448	3.962.742.315	61.733.907.932
449	3.959.294.295	61.735.242.365
450	3.943.124.031	6.174.150.049
451	3.941.960.321	61.741.950.863
452	3.897.495.836	61.759.159.258
453	3.875.581.867	6.176.764.028
454	3.848.634.941	61.778.069.128
455	3.827.422.508	61.786.278.645
456	3.826.856.123	61.786.497.844
457	3.811.628.746	61.792.391.058
458	3.806.690.708	6.179.430.215
459	3.799.871.517	61.796.941.275
460	378.433.247	6.180.295.511
461	3.765.772.531	61.810.138.073
462	376.059.764	6.181.214.083
463	3.755.625.444	61.814.065.141
464	3.755.300.405	61.814.190.936
465	3.695.425.301	61.837.382.421
466	3.693.364.096	61.838.180.789
467	3.662.024.501	61.850.319.585
468	3.625.903.796	61.864.269.286
469	3.659.171.086	61.919.319.638
470	3.684.080.304	61.960.491.819
471	3.693.762.574	61.976.495.541
472	3.695.488.427	61.979.348.185
473	3.697.656.079	61.982.931.074
474	3.707.327.397	6.199.896.081
475	3.713.387.866	6.200.900.574
476	3.713.649.432	62.009.439.273
477	3.716.587.421	62.014.308.846
478	3.725.125.014	62.028.459.488
479	3.728.214.537	62.033.571.997
480	3.733.696.446	6204264.34
481	3.735.698.854	6.204.590.515
482	3.736.504.788	62.047.290.615
483	374.078.098	62.054.366.811
484	3.742.856.139	62.057.800.762
485	3.751.465.842	62.072.048.006
486	3.755.451.383	62.078.643.236

487	3.756.899.525	62.081.039.606
488	3.758.667.437	62.083.965.127
489	3.759.037.598	62.084.577.666
490	3.760.884.742	6208763.43
491	3.762.315.386	62.090.001.713
492	3.763.793.063	62.092.446.959
493	3.770.402.446	62.103.384.093
494	3.771.393.352	62.105.023.835
495	3.773.162.074	62.107.950.696
496	3.775.399.072	62.111.652.456
497	378.074.871	6.212.050.498
498	3.796.783.195	62.147.038.673
499	3.808.121.747	62.165.801.587
500	3.821.944.156	6.218.867.476
501	3.835.360.608	6.221.087.616
502	3.838.438.523	62.215.969.461
503	3.840.907.349	62.220.054.847
504	3.844.445.166	6.222.590.919
505	3.844.986.607	62.226.805.159
506	3.846.424.216	6222918.41
507	3.850.277.595	6.223.556.063
508	3.853.684.439	62.241.198.239
509	3.855.298.947	6.224.386.991
510	3.872.927.607	62.265.433.539
511	3.887.914.852	62.283.766.151
512	3.893.957.304	62.291.157.364
513	389.835.582	62.296.537.692
514	3.939.923.554	62.347.383.938
515	3.946.597.063	6.235.554.707
516	3.947.356.594	6.235.647.614
517	3.948.399.179	62.357.751.445
518	3.951.921.887	62.362.060.472
519	3.958.065.351	62.369.575.244
520	3.977.104.199	62.392.863.835
521	3.999.077.027	62.419.741.312
522	4.024.089.385	62.450.336.786
523	405.278.031	62.485.431.935
524	4.053.698.152	62.486.554.652
525	4.072.974.856	62.510.134.192

526	4.073.301.305	62.510.533.509
527	407.471.628	62.508.547.562
528	4.082.723.464	62.497.076.533
529	4.089.737.663	62.487.028.047
530	4.090.874.713	62.485.399.118
531	4.105.956.264	62.494.249.315
532	411.689.392	6.250.066.778
533	4.127.964.549	62.507.164.277
534	4.132.746.276	62.509.970.303
535	4.139.807.539	62.514.114.013
536	414.674.993	62.518.187.965
537	4.149.959.175	62.520.071.223
538	4.151.444.126	62.520.942.626
539	4.154.937.564	62.522.992.655
540	4.156.423.679	62.523.864.741
541	4.193.461.063	62.545.599.121
542	4.208.727.553	62.554.557.844
543	4.234.544.324	62.569.707.712
544	4.239.273.646	62.572.482.985
545	4.247.840.572	62.577.510.252
546	4.250.226.481	62.578.910.358
547	4.259.392.696	62.584.289.301
548	4.259.598.465	62.584.410.051
549	4.259.649.403	62.583.747.867
550	4.259.726.226	62.582.845.662
551	4.259.810.419	62.581.944.115
552	4.259.967.161	62.581.043.286
553	4.260.000.273	62.580.143.235
554	4.259.976.433	62.579.061.307
555	4.259.777.508	62.576.388.145
556	4.258.638.455	62.564.385.426
557	4.258.526.447	62.563.207.018
558	4.258.422.404	62.562.027.881
559	4.258.326.334	62.560.848.067
560	4.258.238.239	62.559.667.631
561	4.258.158.123	62.558.486.626
562	4.258.085.991	62.557.305.107
563	4.258.021.846	62.556.123.128
564	425.796.569	62.554.940.742

565	4.257.917.526	62.553.758.003
566	4.257.877.357	62.552.574.966
567	4.257.845.184	62.551.391.685
568	4.257.821.008	62.550.208.213
569	4.257.804.831	62.549.024.605
570	4.257.796.654	62.547.840.914
571	4.257.495.121	62.543.807.817
572	4.256.816.621	62.532.416.317
573	4.256.664.186	62.529.497.967
574	4.256.482.728	62.521.412.937
575	4.255.472.308	62.506.285.074
576	4.255.425.636	62.505.990.403
577	425.442.073	62.497.071.611
578	4.254.137.735	62.492.616.711
579	4.253.816.975	62.488.116.716